



Manhattan
STONE AND TILE



CONCRETE COLORS



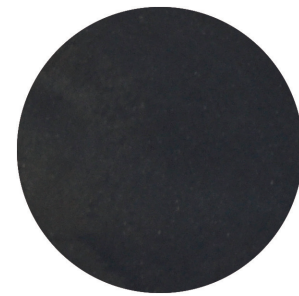
Obsidian



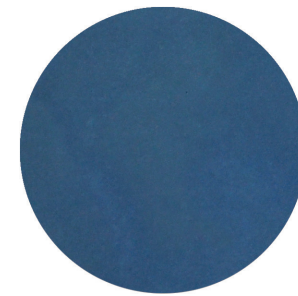
Aged Iron



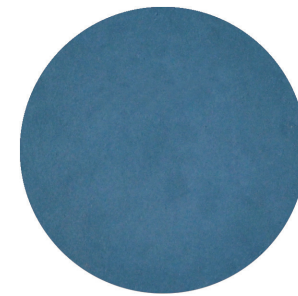
Obelisk



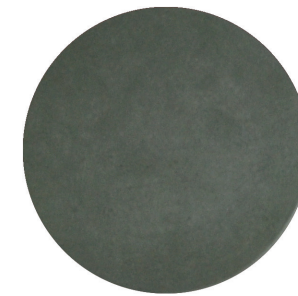
Top Hat



Riptide



Mountain Stream



Moonlit Willow



Camel



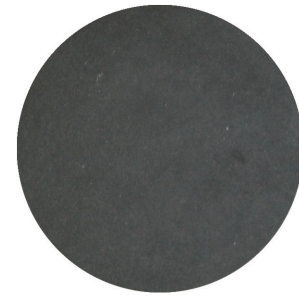
Iron Ore



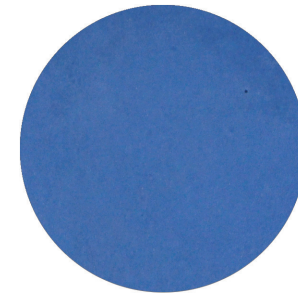
Charcoal



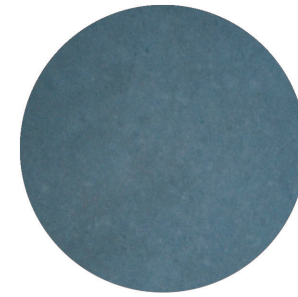
Deep Forest



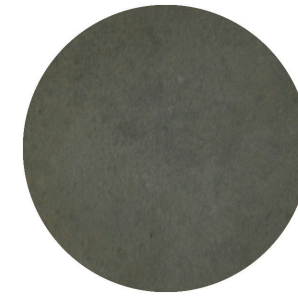
Mariana



Tropical Sky



Icy Lake



Forest Floor



Aged Parchment



Cloudless Night



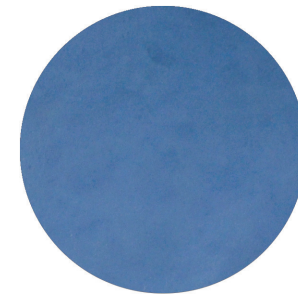
Moose



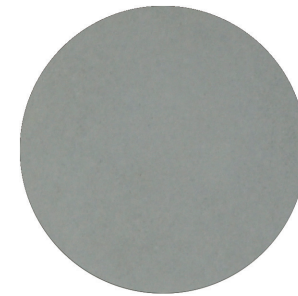
Stormy Gray



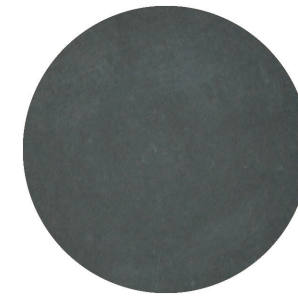
Tundra



Arctic Blue



Ice Melon



Mossy Log



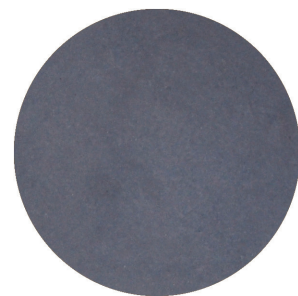
Candlelight



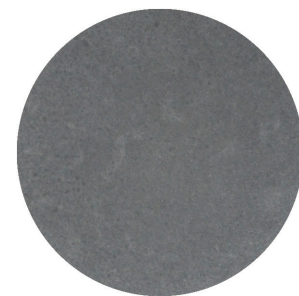
Acropolis



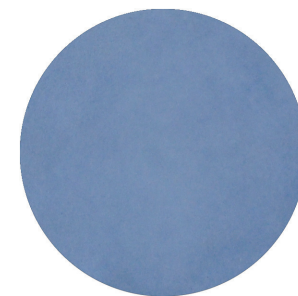
Bold Grey



Austere Lilac



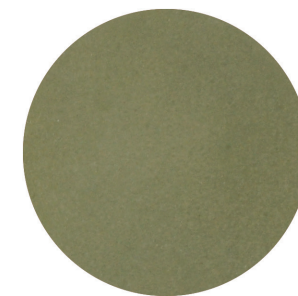
Pigeon



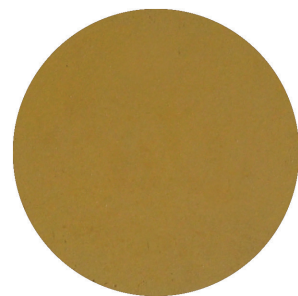
Overcast Morning



Buttermilk



Lily Pad



Singing Yellow



Gull Wing



Matte Gray



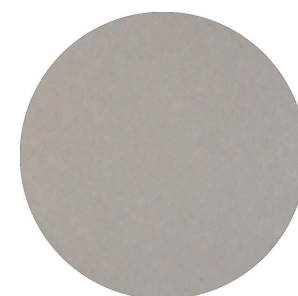
Ballet Slipper



Eggshell



Snowy Owl



Pearl



Sand Dollar



Duckling

Images found in this pamphlet are as accurate as possible. Variables such as altered viewing conditions, print quality, and photographic method may impact perception of the product. Natural products such as stone have intrinsic variability and variations in color, markings, and tone should be expected. Unavoidable aspects in concrete production such as mixing, humidity, and drying speed, cause minor color variations in the final product.

Images found in this pamphlet are as accurate as possible. Variables such as altered viewing conditions, print quality, and photographic method may impact perception of the product. Natural products such as stone have intrinsic variability and variations in color, markings, and tone should be expected. Unavoidable aspects in concrete production such as mixing, humidity, and drying speed, cause minor color variations in the final product.



Rusty Bulwark



Warm Cocoa



Redwood



Thistle



Elegance



Moroccan Clay



Balmy Orange



Colt



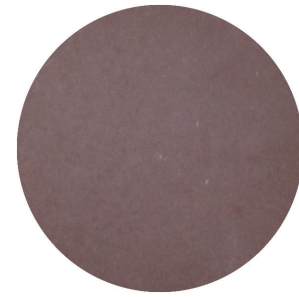
Overgrowth



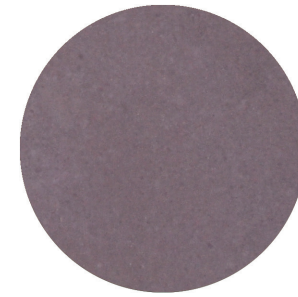
Tempered Brown



Wild Fox



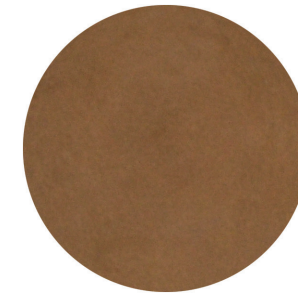
Maternal



Waning Rose



Cinnamon



Turmeric



Muslin



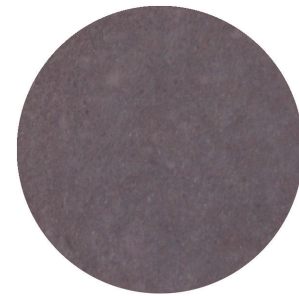
Tarnished Gold



Baked Macadamia



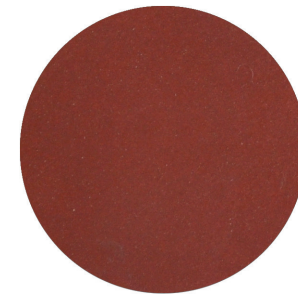
Fresh Earth



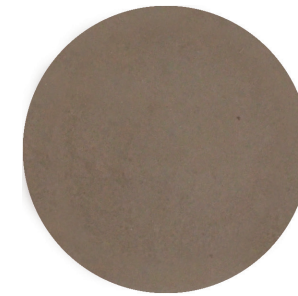
Dried Lavendar



Satin Ribbon



Red Coral



Monument



Maple Bar



Armadillo



Taupe



Mature Rose



Orchid



Blushing Peach



Alaskan Salmon



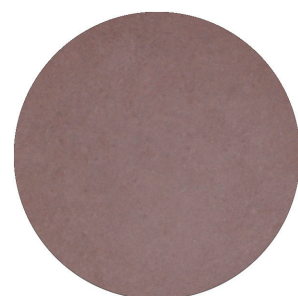
Driftwood



Sidewinder



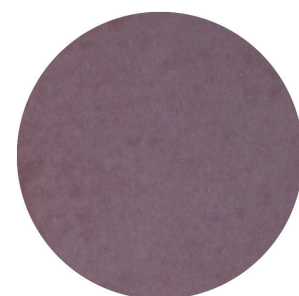
Mushroom



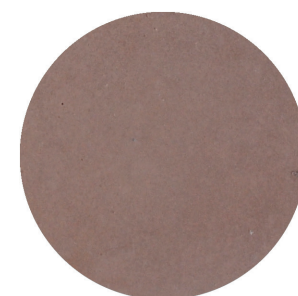
Remembrance



Pink Buttercream



Celebration



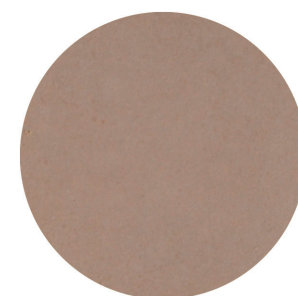
Cozy Peach



Peach



Off White



Ornamental

Images found in this pamphlet are as accurate as possible. Variables such as altered viewing conditions, print quality, and photographic method may impact perception of the product. Natural products such as stone have intrinsic variability and variations in color, markings, and tone should be expected. Unavoidable aspects in concrete production such as mixing, humidity, and drying speed, cause minor color variations in the final product.

Images found in this pamphlet are as accurate as possible. Variables such as altered viewing conditions, print quality, and photographic method may impact perception of the product. Natural products such as stone have intrinsic variability and variations in color, markings, and tone should be expected. Unavoidable aspects in concrete production such as mixing, humidity, and drying speed, cause minor color variations in the final product.



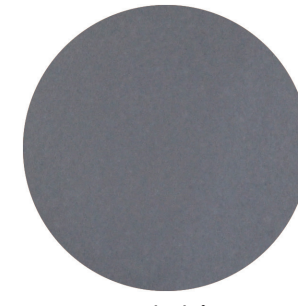
Latte



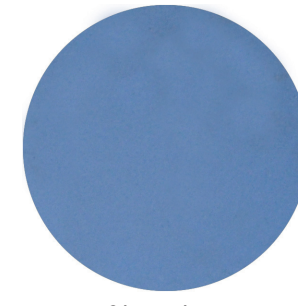
Ivory



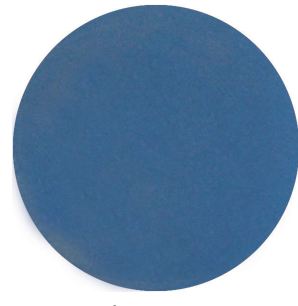
Raven



Dolphin



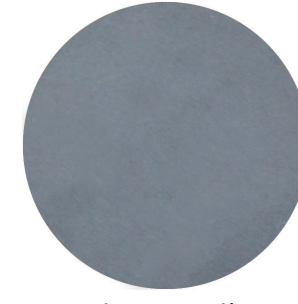
Sky Blue



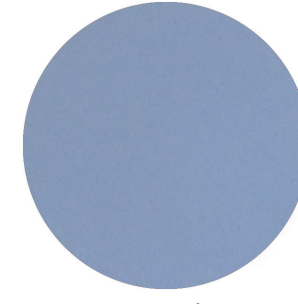
Blue Jay



Modest Brown



Retrospective



Hazy Blue



Lavendar Evening



Adobe



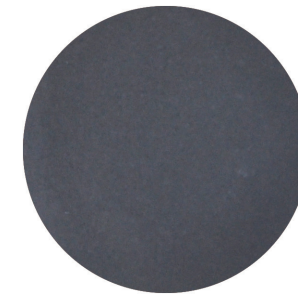
Ashy Skies



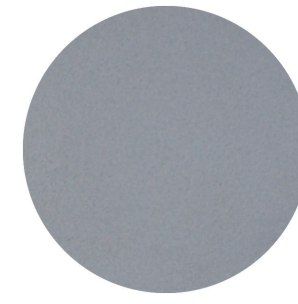
Diamondback



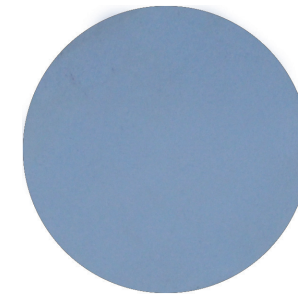
Earnest Wisp



Baseline



Optimistic Gray



Clear Day



Engaged Blue



Apollo



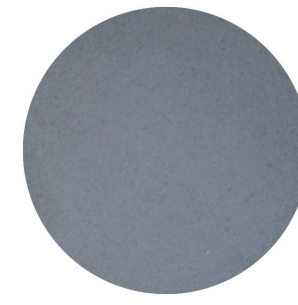
Fresh Tortilla



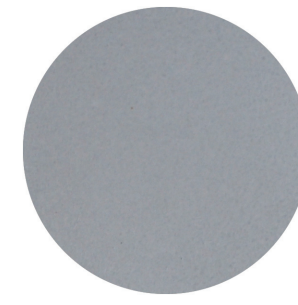
Harvest Moon



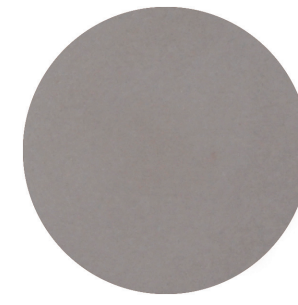
Whispering Woods



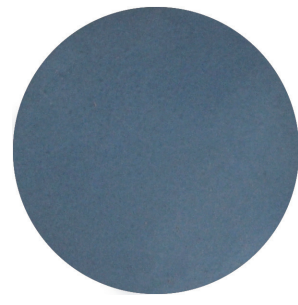
Thick Fog



Select White



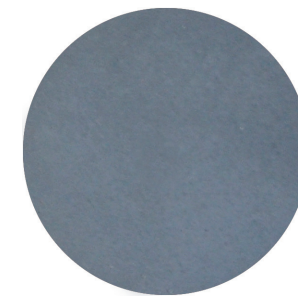
Cappuccino



Cloudy Coast



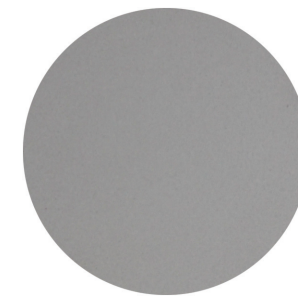
Nightshade



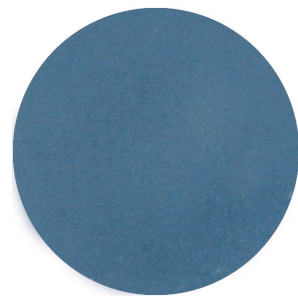
Mindful Gray



Exalted White



Cream



Denim

Images found in this pamphlet are as accurate as possible. Variables such as altered viewing conditions, print quality, and photographic method may impact perception of the product. Natural products such as stone have intrinsic variability and variations in color, markings, and tone should be expected. Unavoidable aspects in concrete production such as mixing, humidity, and drying speed, cause minor color variations in the final product.

Images found in this pamphlet are as accurate as possible. Variables such as altered viewing conditions, print quality, and photographic method may impact perception of the product. Natural products such as stone have intrinsic variability and variations in color, markings, and tone should be expected. Unavoidable aspects in concrete production such as mixing, humidity, and drying speed, cause minor color variations in the final product.



Foggy Moor



Leather Saddle



Sun Dried Brick



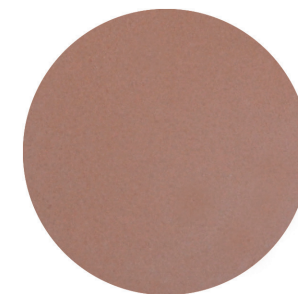
Grizzly



Sunset Orange



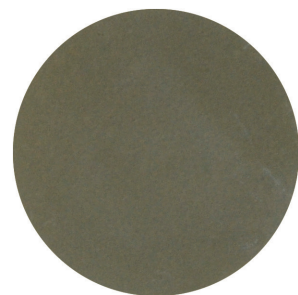
Cake Batter



Shy Peach



Beluga



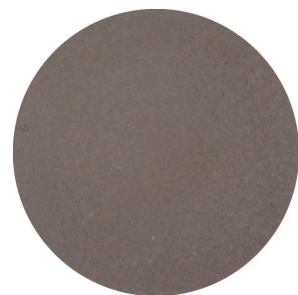
Moss



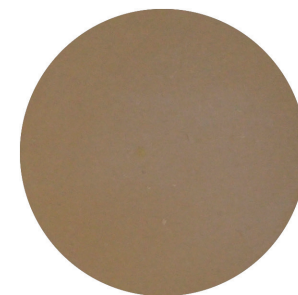
Burnette



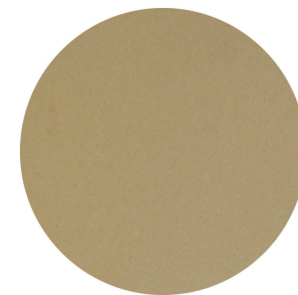
Auburn



Burlap



Khaki



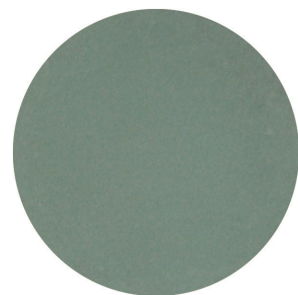
Young Spring



Delicate Peach



Puka Shell



Cool Cucumber



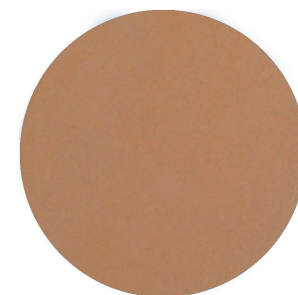
Champion



Lobster



Sky Magenta



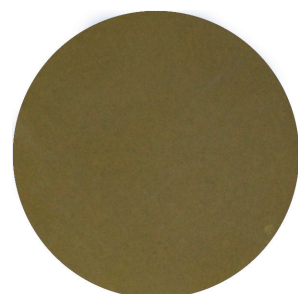
Toasted Coconut



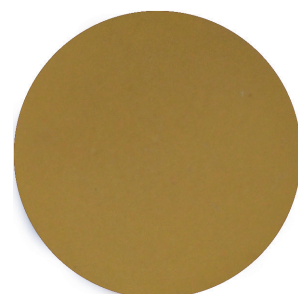
Linen



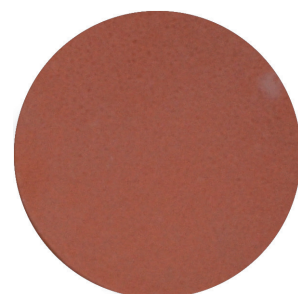
Beach Sand



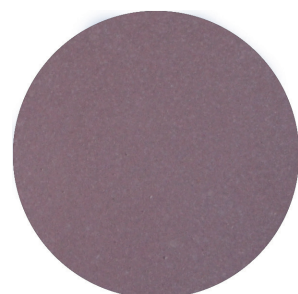
Split Pea



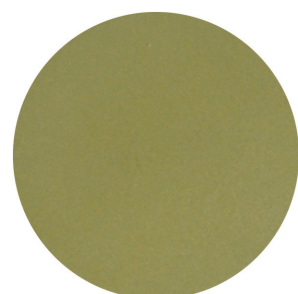
Buttercup



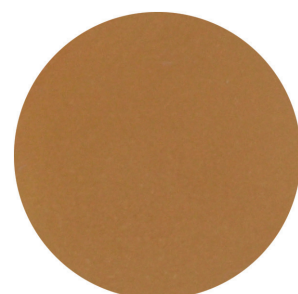
Fired Clay



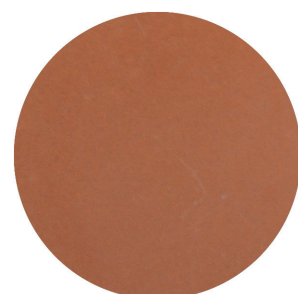
Orchid Pink



Lively Green



Pie Crust



Terracotta



Gentle Mauve



Parthenon



Bashful Aster



Jade Temple

Images found in this pamphlet are as accurate as possible. Variables such as altered viewing conditions, print quality, and photographic method may impact perception of the product. Natural products such as stone have intrinsic variability and variations in color, markings, and tone should be expected. Unavoidable aspects in concrete production such as mixing, humidity, and drying speed, cause minor color variations in the final product.

Images found in this pamphlet are as accurate as possible. Variables such as altered viewing conditions, print quality, and photographic method may impact perception of the product. Natural products such as stone have intrinsic variability and variations in color, markings, and tone should be expected. Unavoidable aspects in concrete production such as mixing, humidity, and drying speed, cause minor color variations in the final product.